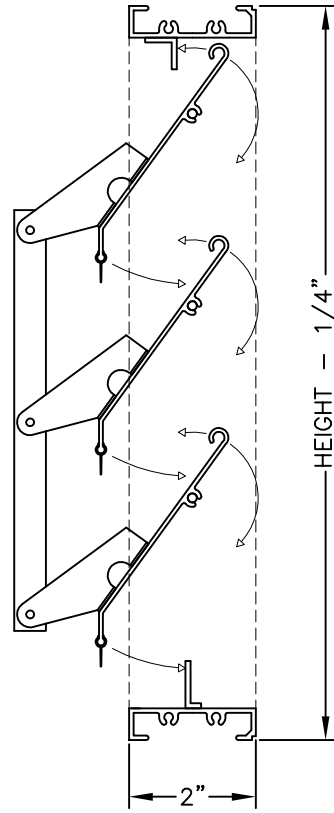
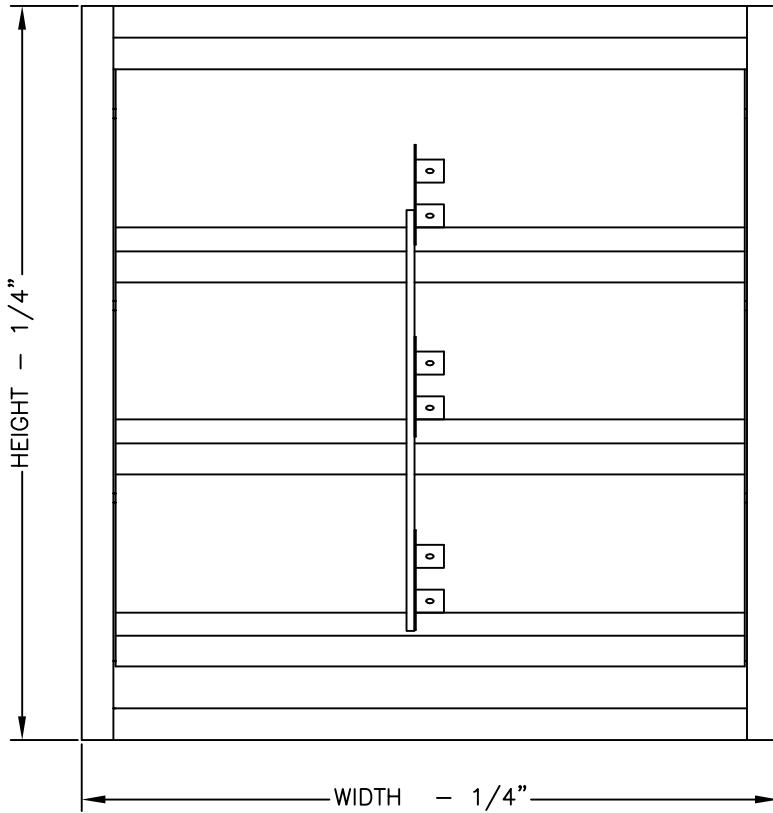


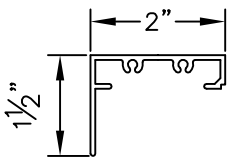
MODEL BDD

2" BACK DRAFT DAMPER
with Outside Linkage

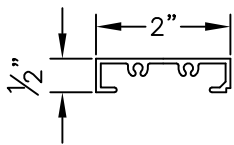
Office: (780) 485-5535
Facsimilie: (780) 485-5156



FLANGE FRAME BDDF



CHANNEL FRAME BDDC (shown)



SPECIFICATIONS

- FRAME** EXTRUDED ALUMINUM CHANNEL .070" THICKNESS.
- BLADES** EXTRUDED ALUMINUM .060". FRONT MOUNTED ALUMINUM LINKAGE. VINYL BLADESEAL.
- CONSTRUCTION** ASSEMBLED WITH CADMIUM PLATED STEEL SCREWS.
- BEARINGS** 3/16" NYLON BUSHINGS.
- AXLES** 3/16" STAINLESS STEEL PINS.
- COUNTERWEIGHT** ADJUSTABLE COUNTERWEIGHT IS AVAILABLE FOR DAMPERS WITH LINKAGE.
- SIZE** MAXIMUM 48" IN WIDTH, MULTIPLE SECTIONS MADE OF EQUAL SIZES.

QTY.	WALL OPENING		LOUVER SIZE	
	WIDTH	HEIGHT	WIDTH	HEIGHT

PROJECT	
DATE	
ENGINEER	
CONTRACTOR	FILE #
SUPPLIER	DWG. #