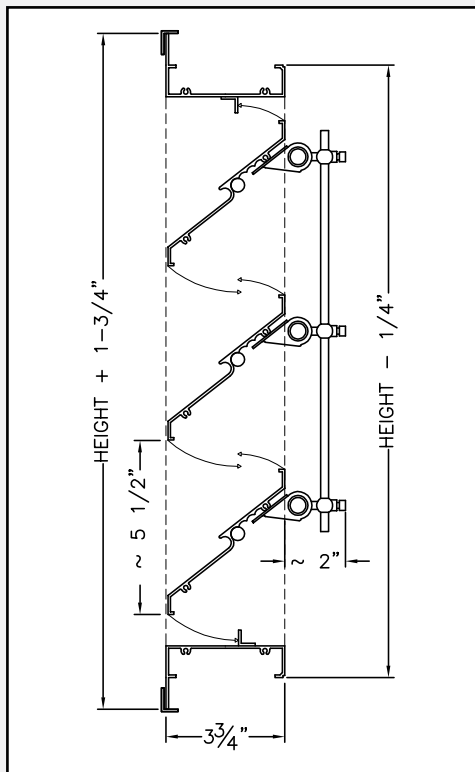


VCD-4F



18" x 18" VCD-4F with Actuator (rendering)



18" VCD-4F (section)

Description

Duravent VCD is a 4 inch deep volume control damper with weather-stopping J blades. It is ideal for controlling airflow in ducts or through wall openings. For pressure relief, or dampened intake/exhaust, see **BDD** - 2, 3, or 4 inch back draft damper.

Construction

- 0.081 inch (1.78 mm) thick aluminum extrusions
- Blades move on 7/16 inch cadmium-plated steel pins in Oilite bronze bushings
- Opposed-blade design (OBD) available, for normal-to-surface airflow (optional)
- 1/4" stainless steel rod linkage; Cadmium-plated steel and bronze brackets
- Assembled with cadmium-plated screws and rivets
- Maximum 48" in width, 60" in height per section
- Finished dimension are 1/4" undersized unless otherwise specified

Frame

- 4" deep channel frame for duct installation
- 4" deep flange frame (1" flange) for building inst.
- Reverse flange frame for surface mount

Actuation

- Manual quadrant; pneumatic or electric actuator
- Multiple actuator mounting options

Airflow characteristics

- **78.9%** free area for 48"x48" size
- Maximum recommended velocity 2000 FPM
- Maximum recommended temperature is 200 °F
- Torque requirement is 3.5 in-lbs / ft² @ 1" W.G.

Free area table - feet² (Computed by AMCA guidelines)

		Width - inches					
		18"	24"	30"	36"	42"	48"
Height - inches	18"	1.53	2.11	2.69	3.27	3.85	4.43
	24"	2.12	2.92	3.73	4.54	5.34	6.15
	30"	2.71	3.74	4.77	5.80	6.83	7.86
	36"	3.23	4.46	5.69	6.93	8.16	9.39
	48"	4.35	6.00	7.66	9.32	11.0	12.6
	60"	5.46	7.54	9.63	11.7	13.8	15.9
	72"	6.58	9.09	11.6	14.1	16.6	19.1